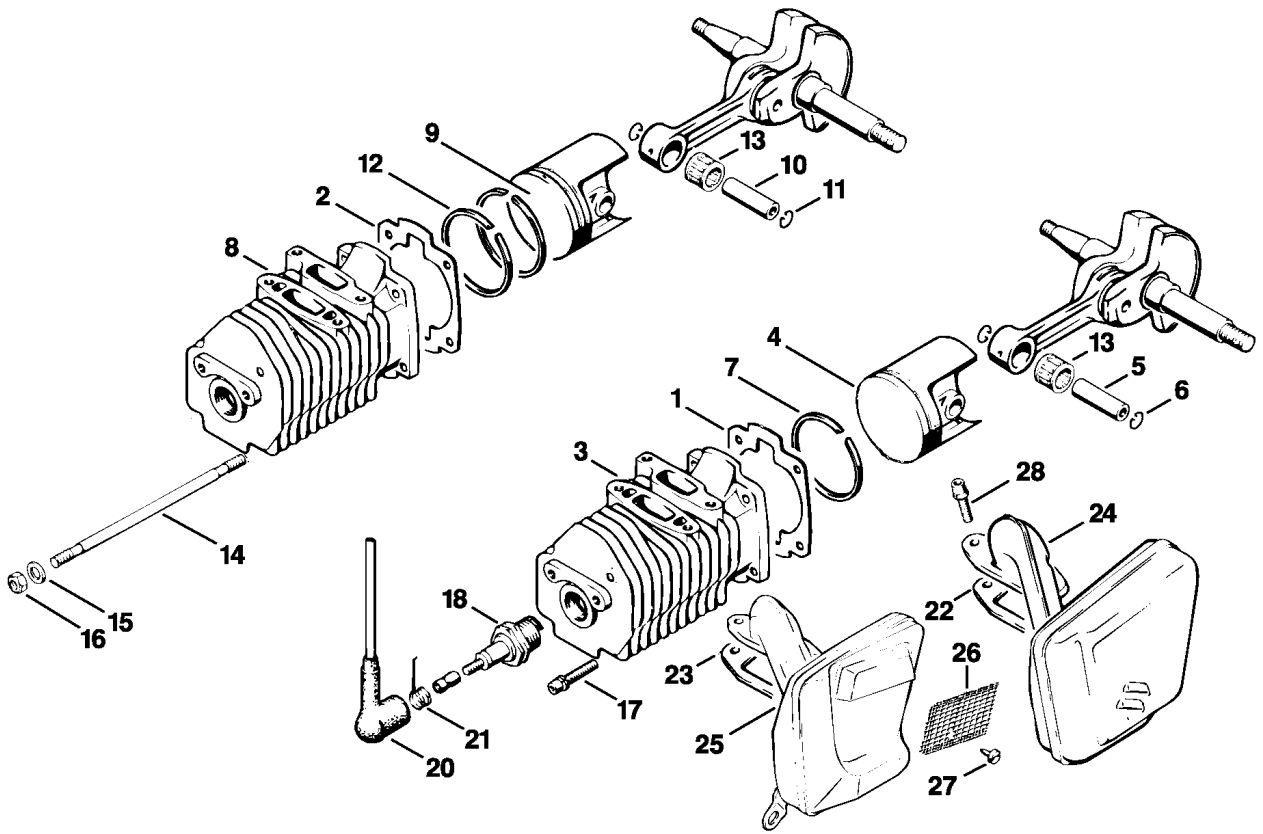


110ET001 LÄ

Reference	Item number	Qty	Description
1	1110 020 2105	1	Crankcase □ 2 - 5, 9, 10, 12
2	9371 470 3120	2	Cylindrical pin 6x20
3	9048 216 1010	8	Pan head screw M5x18
4	1110 122 3900	1	Elbow connector
5	0000 988 5202	1	Connector
6	1110 647 9400	1	Hose
7	1106 640 3801	1	Pickup body
8	9503 003 0340	1	Grooved ball bearing 6202 (1,2,4)
9	9503 003 0341	1	Grooved ball bearing 6202 (3)
10	9456 621 3860	1	Circlip 35x1.5
11	9629 003 2860	1	Oil seal 25x37x7
12	9503 003 0310	1	Grooved ball bearing 6002
13	9640 003 1570	1	Oil seal 15x24x7
14	1110 029 0501	1	Gasket
15	1110 030 0401	1	Crankshaft
16	1110 790 9900	2	Annular buffer
17	1110 791 5400	1	Support
18	0000 958 0502	1	Washer
19	0000 951 8210	1	Flat head screw M6
20	9214 320 0700	1	Lock nut M5
21	9048 216 1010	2	Pan head screw M5x18
22	1114 640 3600	1	Oil filler cap □ 23
23	0000 992 6305	1	Sealing ring
24	1114 656 7700	1	Chain catcher
25	9021 319 0670	1	Pan head screw M4x14

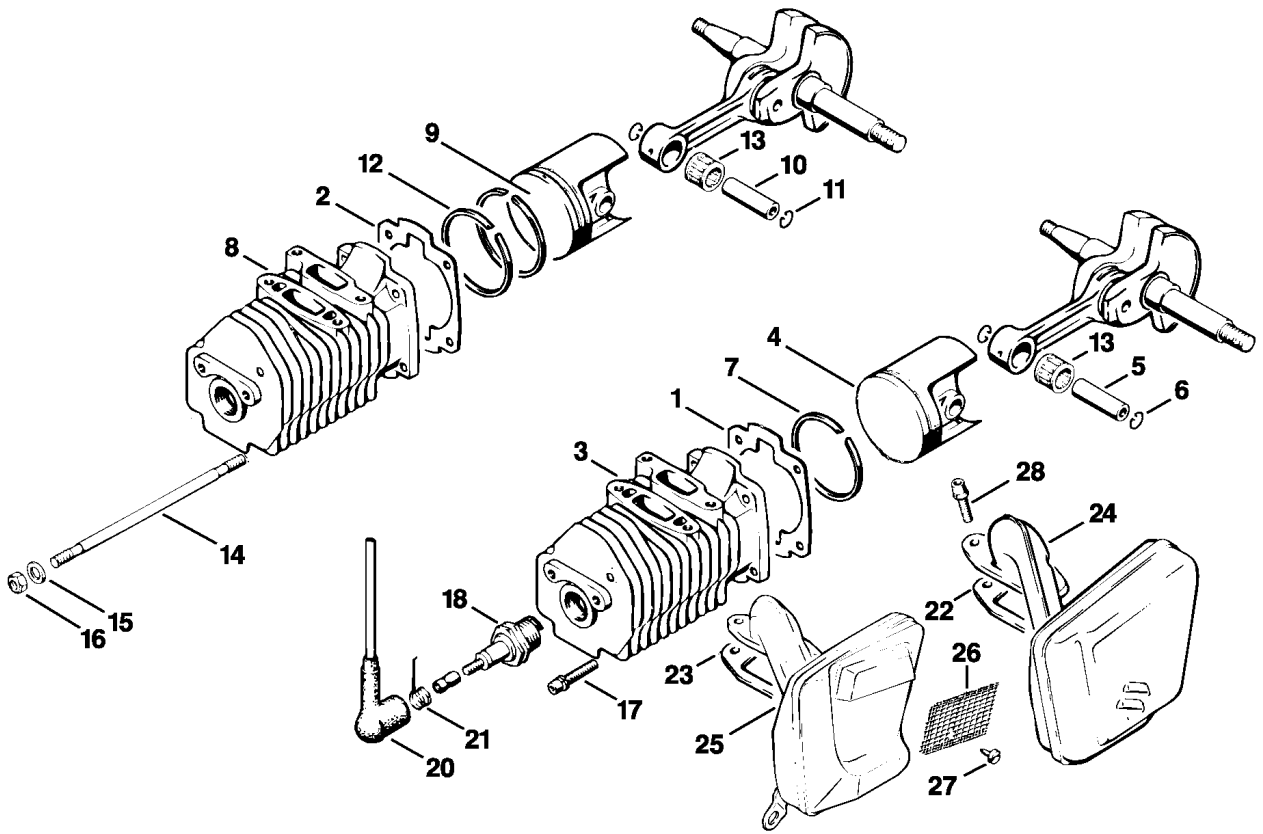
(1) 041 AVQ, (2) 041 AVEQ, (3) 041 AVSEQ, (4) 041 AVFBQ



110ET003 LÄ

Reference	Item number	Qty	Description
1	1110 029 2300	1	Cylinder gasket (1,2,4)
2	1110 029 2301	1	Cylinder gasket (3)
3	1110 020 1210	1	Cylinder with piston Ø 44 mm (1,2,4) □ 4 - 7
4	1110 030 2000	1	Piston Ø 44 mm □ 5 - 7
5	1110 034 1500	1	Piston pin 10x6x32
6	9462 650 1000	2	Snap ring 10
7	1110 034 3000	2	Piston ring Ø 44x1.5 mm
8	1110 020 1203	1	Cylinder with piston Ø 48 mm (3) □ 9 - 12
9	1110 030 2003	1	Piston Ø 48 mm □ 10 - 12
10	1110 034 1502	1	Piston pin 10x6x35
11	9462 650 1000	2	Snap ring 10
12	1110 034 3003	2	Piston ring Ø 48x1.5 mm
13	9512 003 2340	1	Needle cage 10x14x13
14	0000 953 0816	4	Stud (3)
15	9291 021 0120	4	Washer 5.3 (3)
16	9210 261 0700	4	Hexagon nut M5 (3)
17	9036 341 1010	4	Socket head screw M5x18 (1,2,4)
18	1110 400 7005	1	Spark plug Bosch WSR 6 F
18	0000 400 7000	1	Spark plug NGK BPMR7A
20	1106 405 1000	1	Spark plug boot
21	0000 998 0603	1	Torsion spring

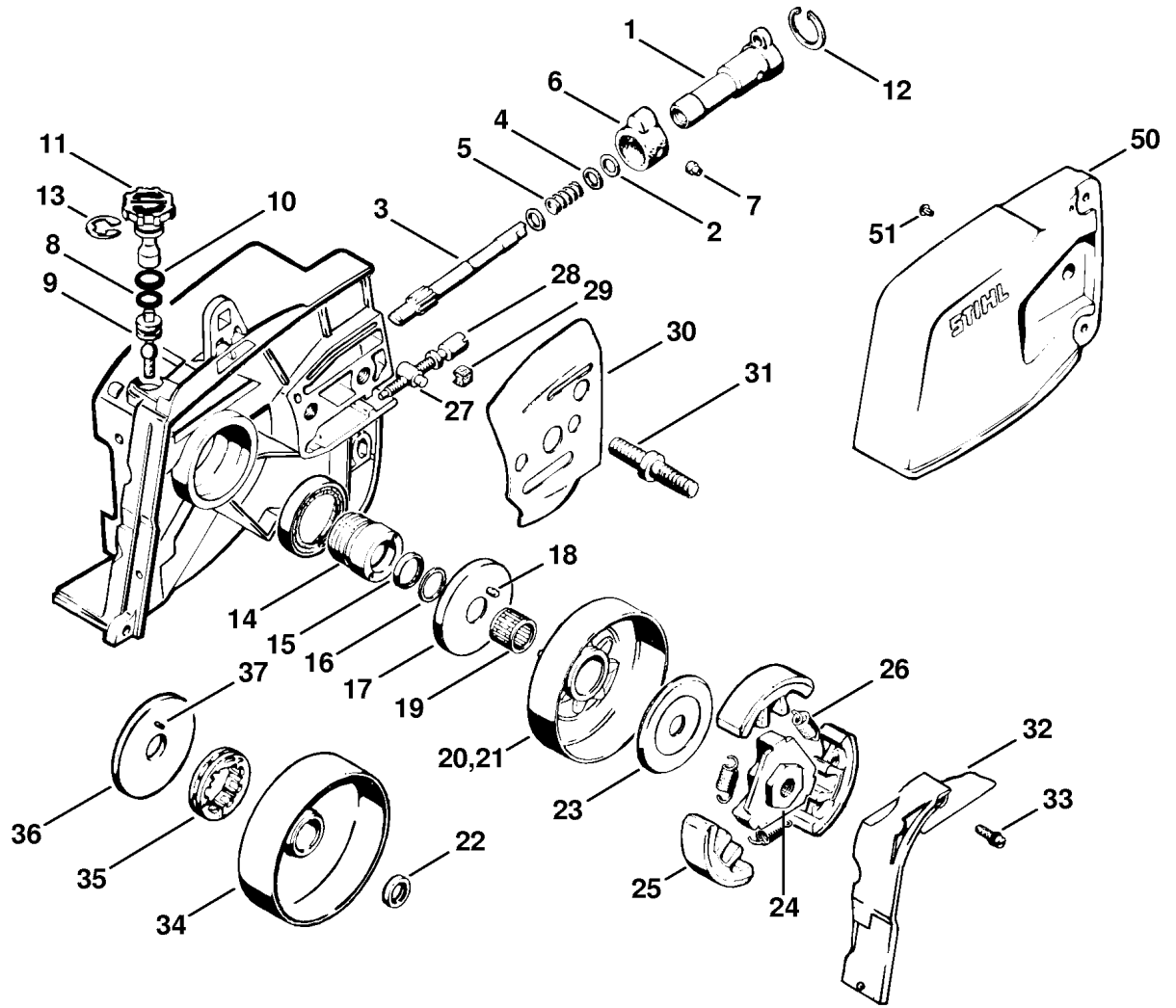
(1) 041 AVQ, (2) 041 AVEQ, (3) 041 AVSEQ, (4) 041 AVFBQ



110ET003 LÄ

Reference	Item number	Qty	Description
22	1110 149 0600	1	Muffler gasket (1,2,4)
23	1110 149 0601	1	Muffler gasket (3)
24	1110 140 0606	1	Muffler
25	1110 140 0613	1	Muffler USA, AUS, CDN □ 26, 27
25	1110 140 0614	1	Muffler (3) USA, AUS, CDN □ 26, 27
26	1111 141 9005	1	Screen
27	9099 021 0810	1	Self-tapping screw 4.2x9.5
28	9036 341 0980	2	Socket head screw M5x16

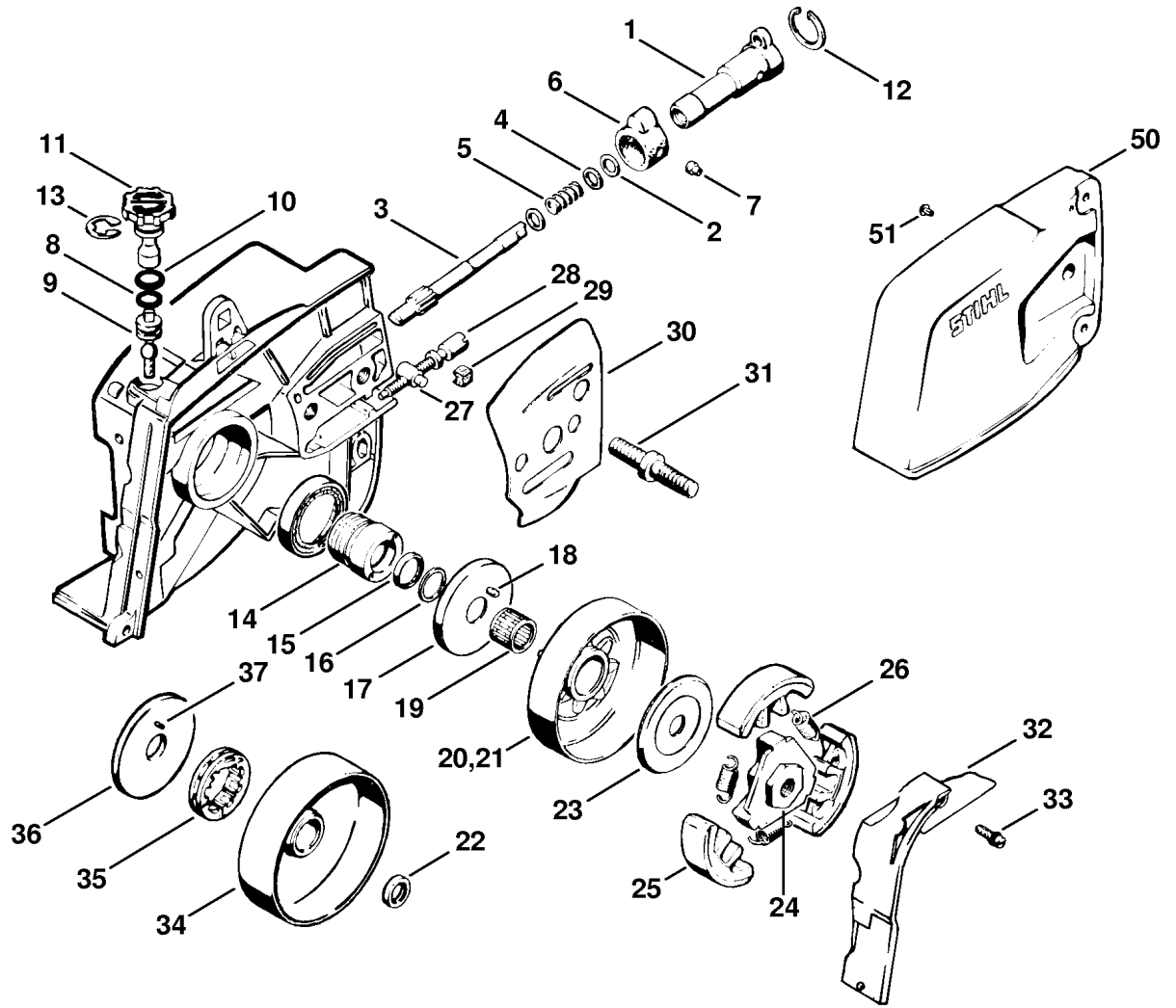
(1) 041 AVQ, (2) 041 AVEQ, (3) 041 AVSEQ, (4) 041 AVFBQ



110ET000 GM

Reference	Item number	Qty	Description
	1110 640 3200	1	Oil pump □ 1 - 7
1	1110 640 3000	1	Pump housing
2	9646 945 0340	1	O-ring 6x1.5
3	1110 647 0601	1	Pump piston
4	0000 958 0602	2	Washer
5	0000 997 0805	1	Compression spring
6	1110 647 9000	1	Rubber ring
7	0000 963 0501	2	Bushing
8	9646 945 0490	1	O-ring 7x1.5
9	1110 647 4800	1	Control bolt
10	9646 945 0590	1	O-ring 8x2
11	1110 647 4900	1	Control knob
12	9456 621 2140	1	Circlip 20x1
13	9460 624 0800	1	E-clip 8
14	1110 640 7100	1	Worm □ 15, 16
15	9643 003 1160	1	Sealing ring 12x16x3
16	1110 647 9705	1	Ring
17	1110 030 7502	1	Cover washer (1,2,3,4) □ 18
18	9371 651 1360	1	Cylindrical pin 2.5x11
19	9512 933 3000	1	Needle cage 12x15x13
20	1113 640 2000	1	Chain sprocket 3/8"
	1110 007 1017	1	Set chain sprocket 0.404" (B) □ 21, 22
21	1110 640 2017	1	Chain sprocket 0.404"
22	0000 961 1001	1	Ring → 5 664 890
23	1110 162 8900	1	Washer

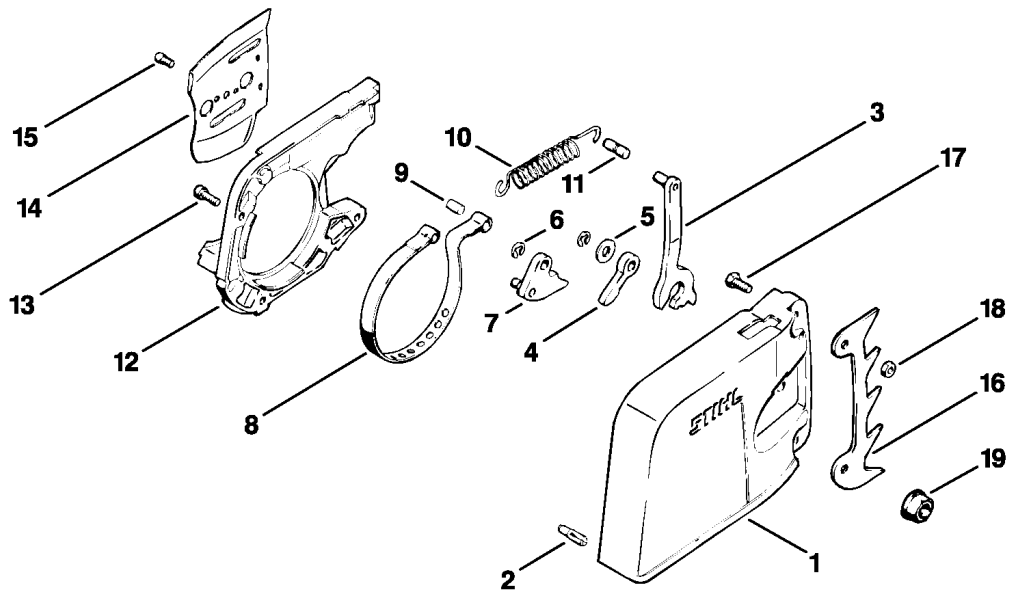
(1) 041 AVQ, (2) 041 AVEQ, (3) 041 AVSEQ, (4) 041 AVFBQ



110ET000 GM

Reference	Item number	Qty	Description
	1113 160 2010	1	Clutch □ 24 - 26
24	1113 162 3205	1	Carrier
25	1113 162 0802	3	Clutch shoe
26	0000 997 5811	3	Tension spring
27	1120 664 1500	1	Tensioning nut
28	1110 664 1600	1	Adjusting screw
29	1110 021 9000	1	Clamp
30	1113 664 1001	1	Inner side plate
31	1110 664 2400	2	Collar screw
32	1110 656 1502	1	Guard plate
33	9044 319 0660	1	Pan head screw M4x12
	1110 007 1040	1	Rim sprocket kit 3/8" (B) □ 34 - 37, 22
34		1	Clutch drum (D)
35	0000 642 1220	1	Rim sprocket 3/8" 7T
36	1110 030 7503	1	Cover washer □ 37
37	9371 651 1350	1	Cylindrical pin 2.5x10
50	* 1110 648 0406	1	Chain sprocket cover
51	* 9441 065 1910	2	Round head rivet 3x8
	* 1110 664 1500	1	Tensioning nut (A) → X 11 450 921 (39.1983)

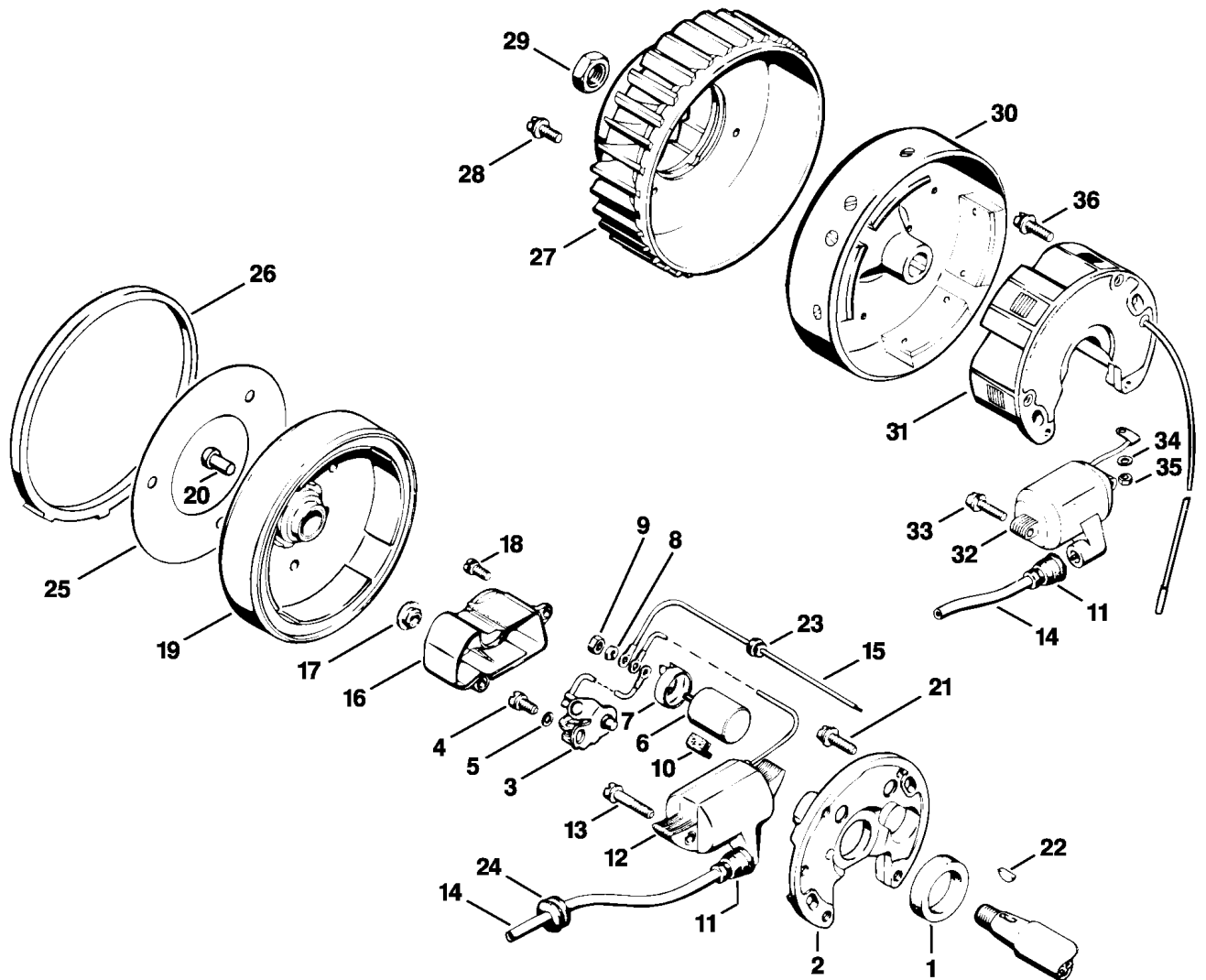
(1) 041 AVQ, (2) 041 AVEQ, (3) 041 AVSEQ, (4) 041 AVFBQ



110ET007 LÄ

Reference	Item number	Qty	Description
	1110 640 1706	1	Chain sprocket cover □ 1 - 18
1	1110 640 1705	1	Chain sprocket cover □ 2
2	0000 971 0608	1	Pin
3	1110 160 5001	1	Lever
4	1115 162 5005	1	Lever
5	0000 958 0702	1	Washer
6	9460 624 0500	2	E-clip 5
7	1113 160 5100	1	Cam
8	1113 160 5400	1	Brake band
9	1118 162 5220	1	Pin
10	1115 162 7900	1	Tension spring
11	1115 162 5220	1	Pin
12	1110 648 7700	1	Cover
13	9048 319 0660	4	Pan head screw M4x12
14	1113 664 1100	1	Outer side plate
15	9048 319 0650	1	Pan head screw M4x10
16	1110 664 0501	1	Bumper spike
17	9008 319 0960	2	Hexagon head screw M5x12
18	9214 320 0700	2	Lock nut M5
19	0000 955 0801	2	Hexagon nut M8

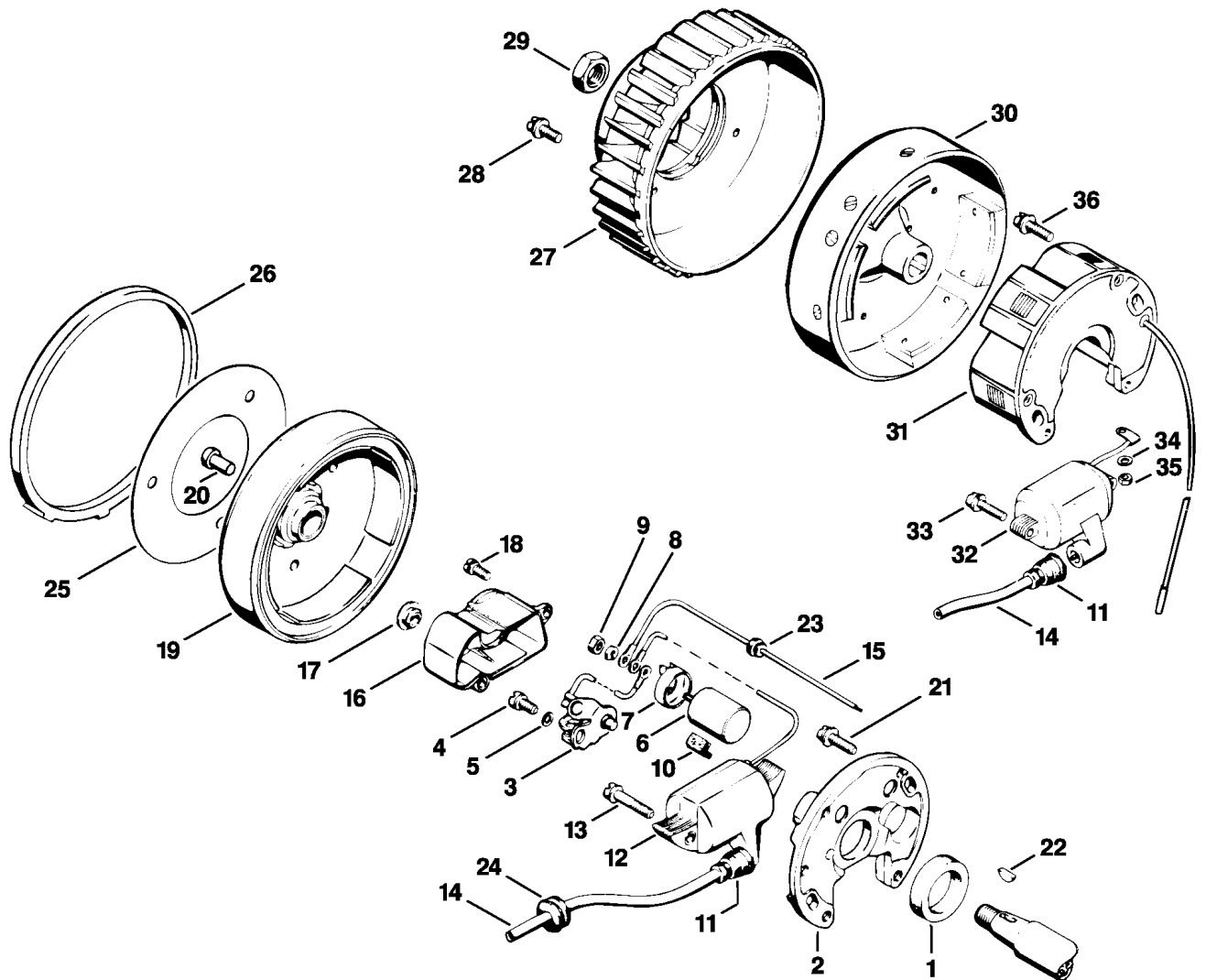
(1) 041 AVQ, (2) 041 AVEQ, (3) 041 AVSEQ, (4) 041 AVFBQ



110ET008 LÄ

Reference	Item number	Qty	Description
1	0000 992 5740	1	Sealing ring (1,4)
	1110 400 0511	1	Magneto (1,4) □ 2 - 19
2	1110 400 0812	1	Stator plate □ 3 - 18
			Set of points
3	1115 400 2000	1	Set of points
4	9041 216 0630	1	Pan head screw M4x8
5	9322 630 0100	1	Spring washer 4
6	1115 404 3400	1	Capacitor
7	1115 404 8800	1	Cap
8	9321 630 0080	1	Spring washer 3
9	9210 260 0400	1	Hexagon nut M3
10	1110 404 4200	1	Felt wick
11	0000 989 1010	1	Grommet
12	1115 404 3200	1	Ignition coil
13	9110 313 0700	2	Flat head screw M4x19
14		1	Ignition lead 295 mm
15	1110 440 1102	1	Short circuit wire
16	1115 400 8200	1	Dust cap □ 17
			Plug
17	1110 145 9001	1	Plug
18	9047 319 0340	2	Pan head screw M3x8
19	1110 400 1205	1	Flywheel
20	0000 988 6008	3	Plug
21	9021 319 0670	2	Pan head screw M4x14

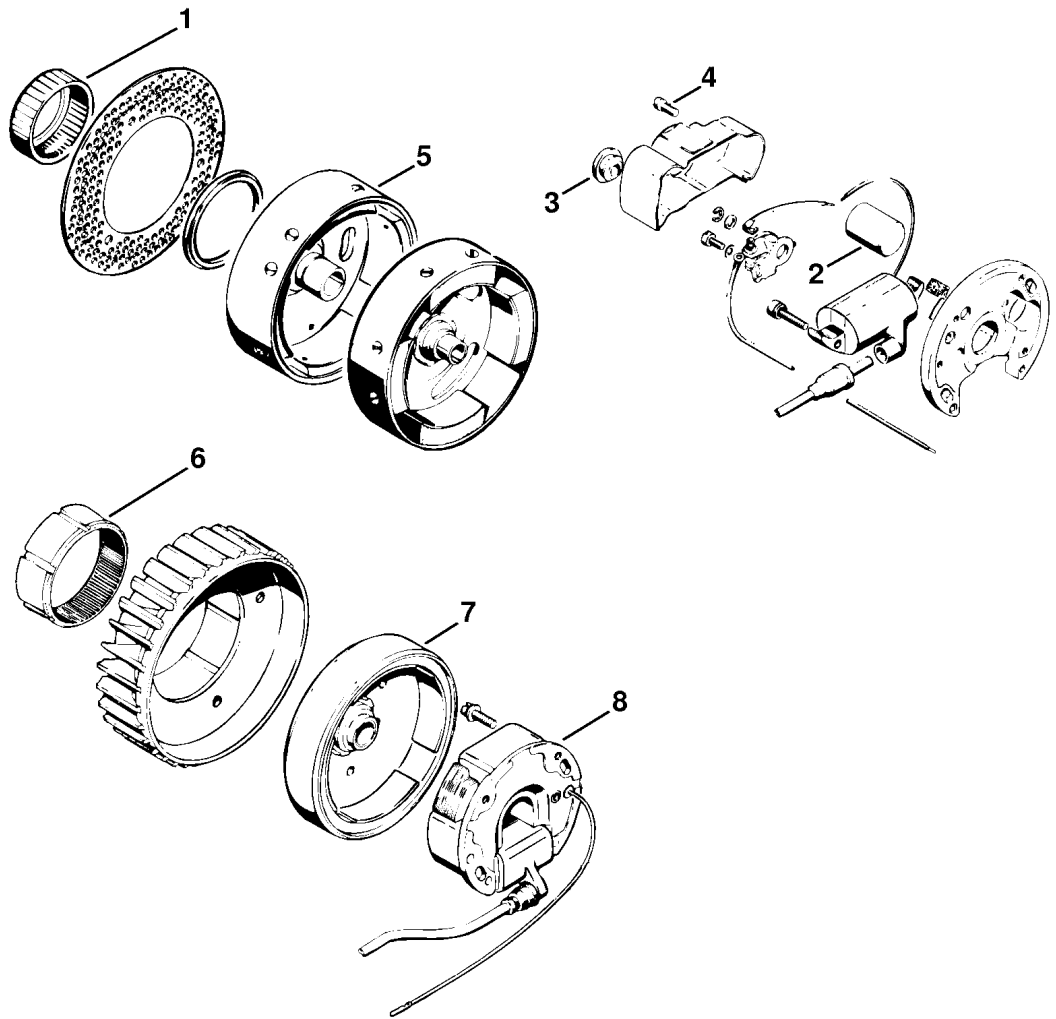
(1) 041 AVQ, (2) 041 AVEQ, (3) 041 AVSEQ, (4) 041 AVFBQ



110ET008 LÄ

Reference	Item number	Qty	Description
22	9482 435 0030	1	Woodruff key 2x3.7
23	0000 989 0804	1	Grommet
24	0000 989 0801	2	Grommet
25	1110 089 0500	1	Gasket
26	1110 086 8902	1	Sealing ring
27	1110 086 0505	1	Fanwheel
28	9044 319 0680	3	Pan head screw M4x16
29	9210 261 1140	1	Hexagon nut M8x1
	1110 400 0507	1	Magneto SEM □ 11, 14, 30 - 36
30	1110 400 1207	1	Flywheel
31	1110 400 0808	1	Stator plate □ 11, 14, 32 - 36
32	1110 404 3210	1	Ignition coil
33	9048 319 0680	2	Pan head screw M4x16
34	9291 021 0080	1	Washer 3.2
35	9210 260 0400	1	Hexagon nut M3
36	9044 319 0740	2	Pan head screw M4x25

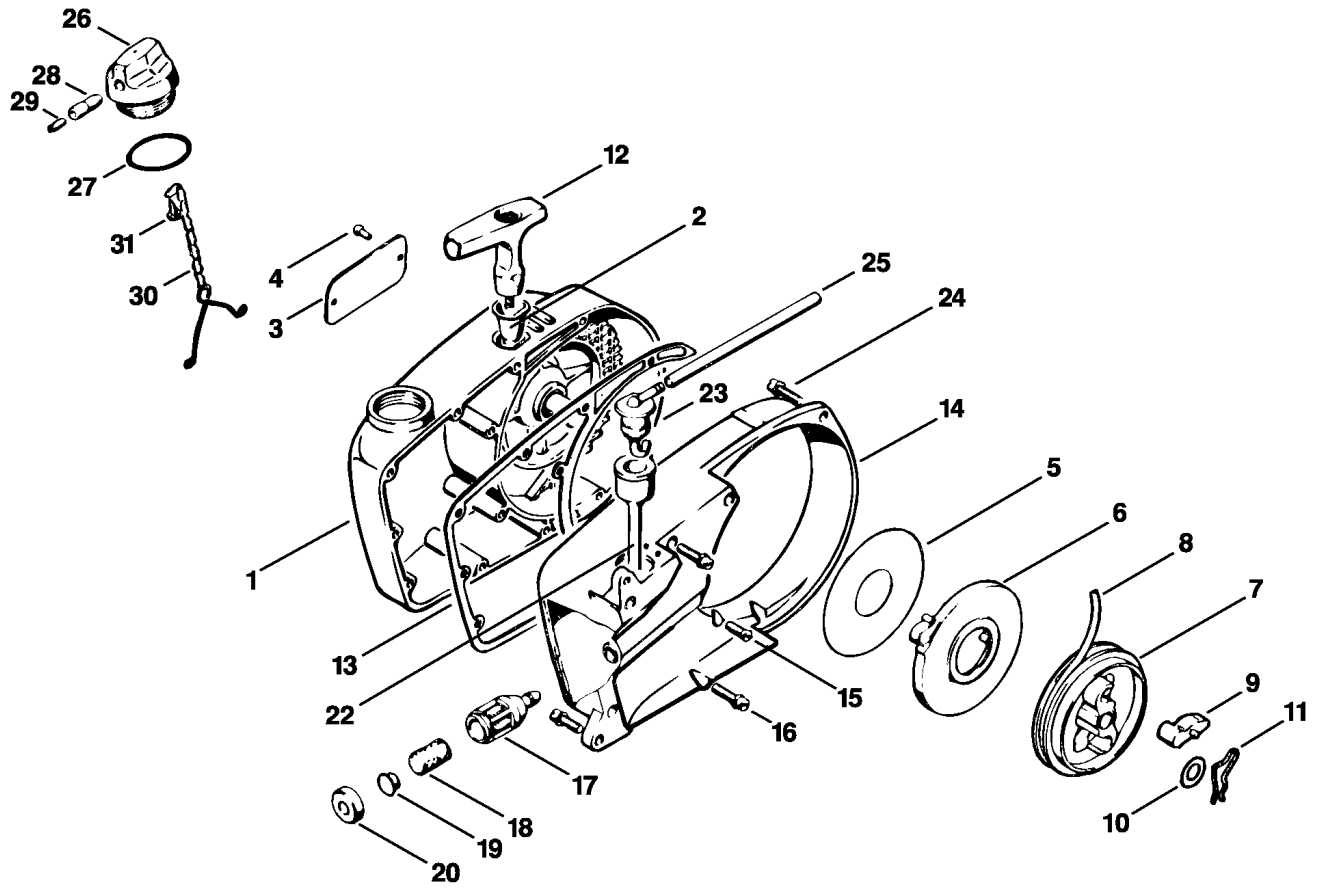
(1) 041 AVQ, (2) 041 AVEQ, (3) 041 AVSEQ, (4) 041 AVFBQ



110ET023 GM

Reference	Item number	Qty	Description
1	* 0000 961 5115	1	Ring
2	* 1106 404 3401	1	Capacitor
3	* 1110 145 9001	1	Plug
4	* 9048 319 0650	1	Pan head screw M4x10
5	* 1110 400 1201	1	Flywheel
6	* 0000 961 5116	1	Ring → 5 816 401 (27.1979)
	* 1110 400 0506	1	Magneto (2) → 5 816 401 (27.1979) □ 7, 8
7	* 1110 400 1206	1	Flywheel → 5 816 401 (27.1979)
8	*	1	Stator plate (D) → 5 816 401 (27.1979)

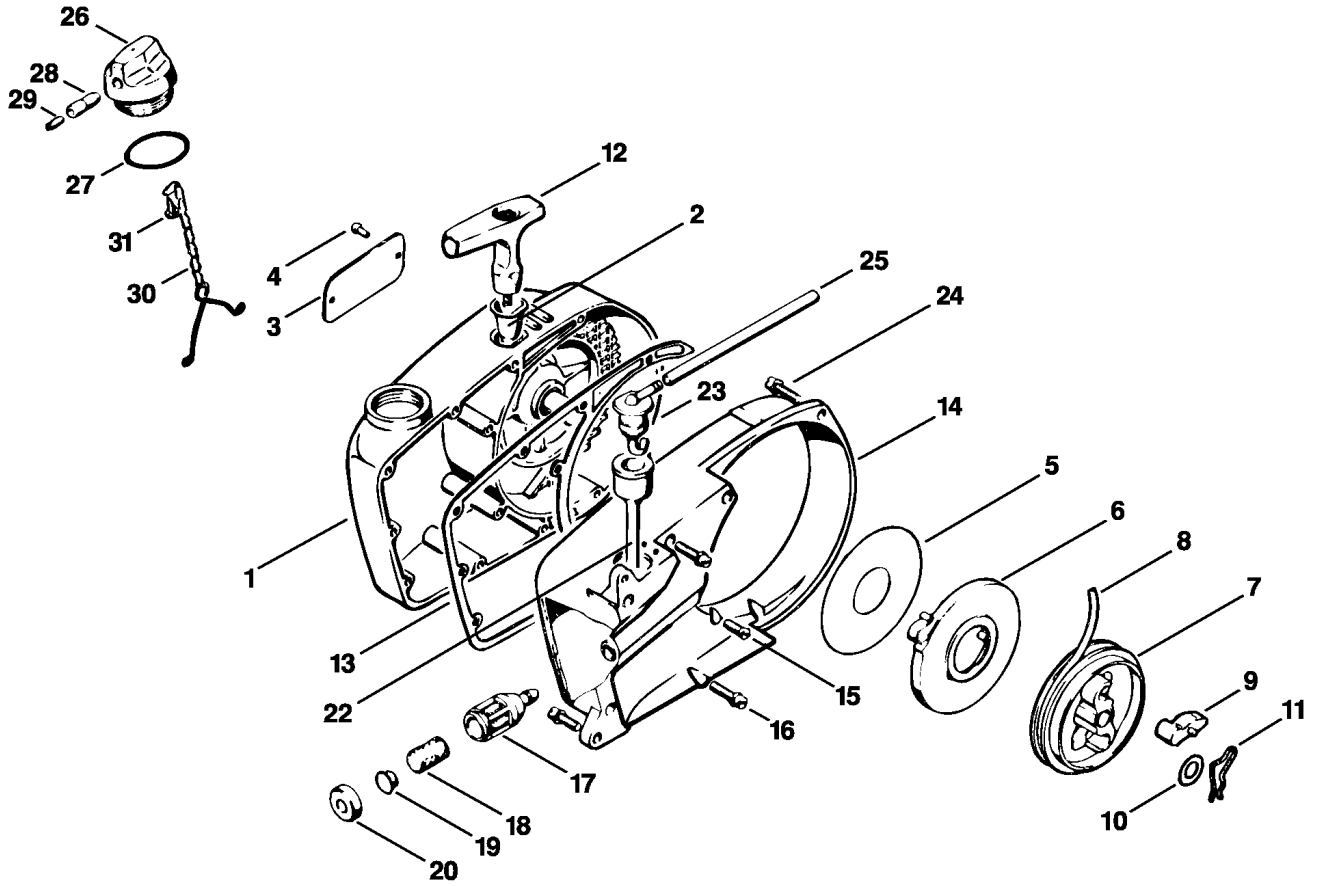
(1) 041 AVQ, (2) 041 AVEQ, (3) 041 AVSEQ, (4) 041 AVFBQ



110ET010 LÄ

Reference	Item number	Qty	Description
	1110 080 2815	1	Fan cover with rewind starter □ 1 - 12
1	1110 080 2805	1	Fan cover □ 2 - 4
2	1110 084 9102	1	Bushing
3	0000 967 2020	1	Nameplate STIHL
4	9441 065 1270	2	Round head rivet 2.6x6
5	1106 195 9015	1	Washer
6	1117 190 0601	1	Rewind spring
7	1117 007 1014	1	Rope rotor kit □ 9
8	1107 195 8200	1	Starter rope Ø 4.5x1000 mm
9	1124 195 7200	1	Pawl
10	1118 162 8935	1	Washer
11	1117 195 3500	1	Spring
12	1121 195 3400	1	Starter grip
13	1110 359 0701	1	Gasket
14	1110 084 1000	1	Fan housing
15	9062 319 0660	2	Countersunk screw M4x12
16	9048 319 0660	9	Pan head screw M4x12
17	1115 350 3503	1	Pickup body □ 18 - 20
18	1110 358 1800	1	Filter
19	1115 358 8200	1	Weight
20	1115 358 2500	1	Cap

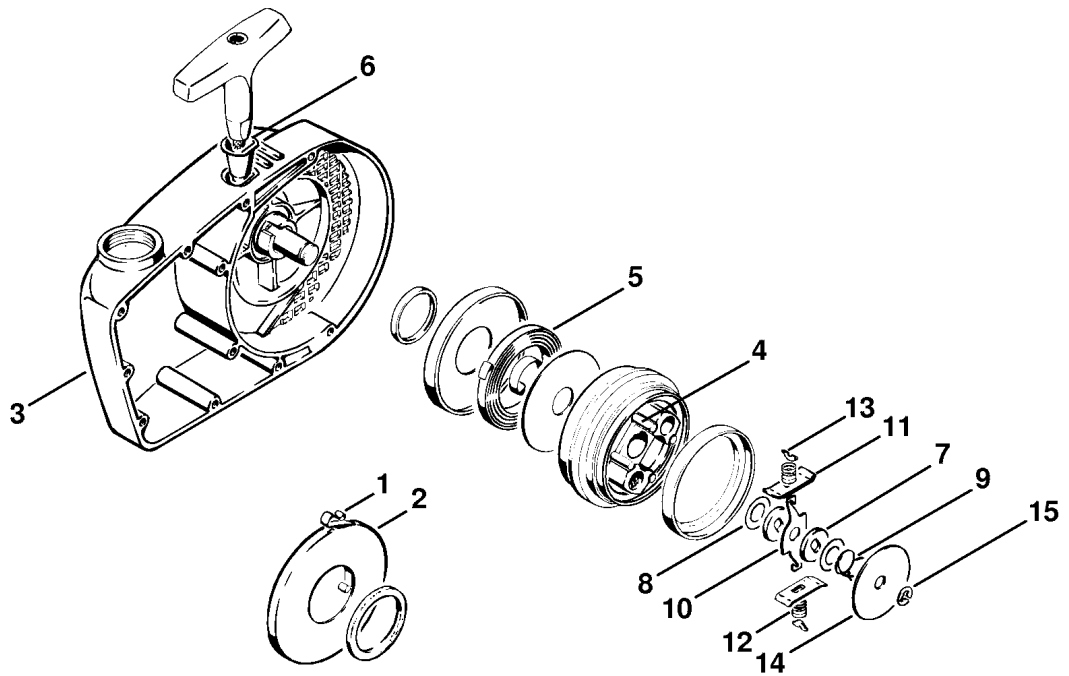
(1) 041 AVQ, (2) 041 AVEQ, (3) 041 AVSEQ, (4) 041 AVFBQ



110ET010 LÄ

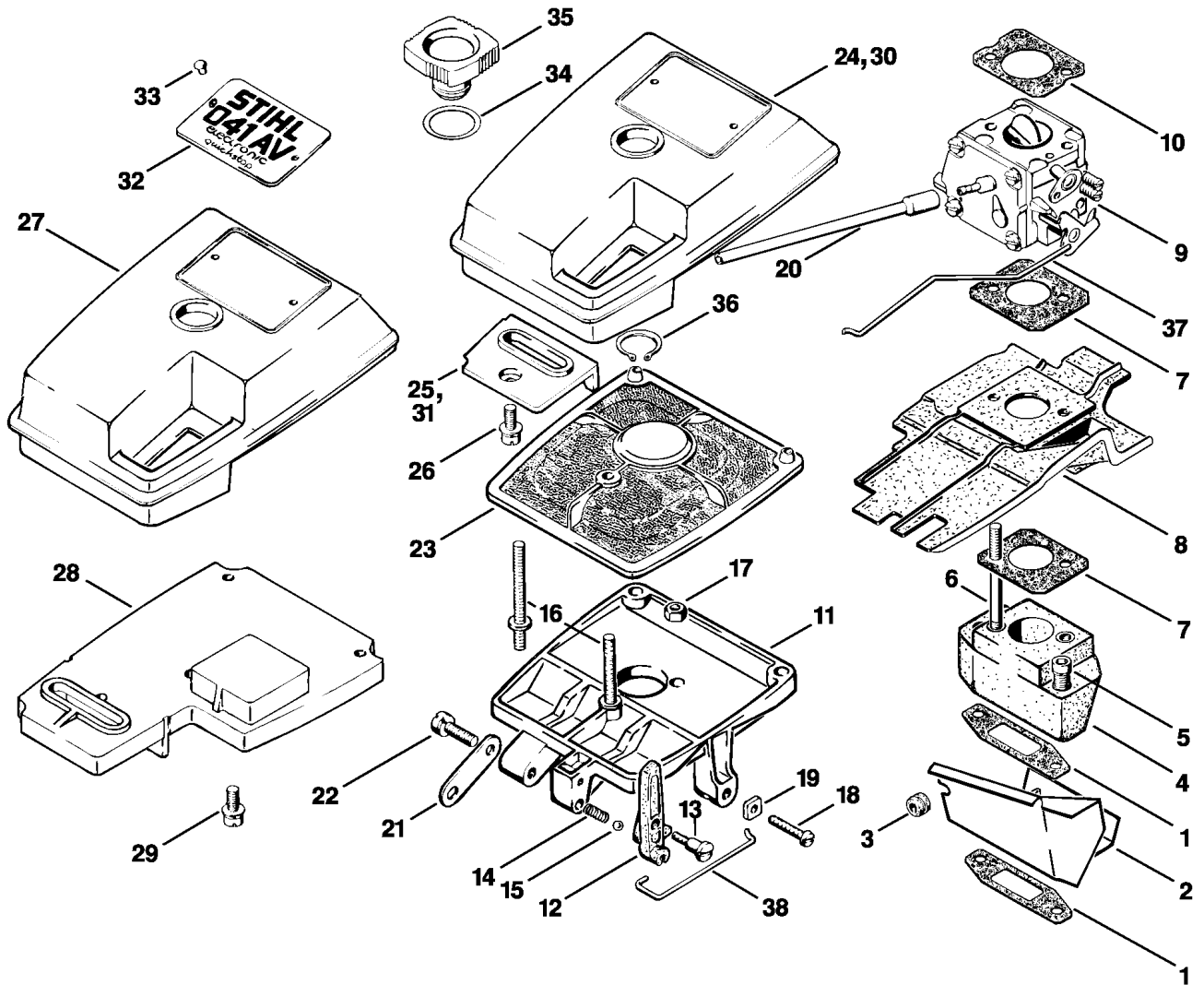
Reference	Item number	Qty	Description
22	1113 358 7700	1	Hose
23	1110 350 1200	1	Elbow connector
24	9048 216 1010	4	Pan head screw M5x18
25		1	Hose 3.1x5.7x135 mm (D)
	0000 930 2803	1	Hose 3.1x5.7 mm x 1 m (A,B)
26	1110 350 0501	1	Filler cap □ 27 - 31
27	9645 945 2820	1	O-ring 25x2.5
28	1110 353 8102	1	Insert
29	0000 951 5800	1	Grub screw
30	1117 350 0905	1	Filler cap retainer
31	9099 021 2360	1	Self-tapping screw 3.5x9.5

(1) 041 AVQ, (2) 041 AVEQ, (3) 041 AVSEQ, (4) 041 AVFBQ



Reference	Item number	Qty	Description
1 *	1110 190 0600	1	Rewind spring → 2 663 618 (11.1968)
2 *	1110 195 0300	1	Spring housing → 2 663 618 (11.1968)
3 *	1110 080 2800	1	Fan cover
4 *	1106 195 9800	4	Notched pin
5 *	1111 195 1600	1	Rewind spring
6 *	1107 195 8200	1	Starter rope Ø 4.5x1000 mm
7 *	1106 195 9001	2	Washer
8 *	0000 958 1010	2	Washer
	* 1106 190 4600	1	Friction shoe
9 *	1106 195 2900	1	Brake spring
10 *	1106 195 3000	1	Brake lever
11 *	1106 195 5000	2	Friction shoe plate
12 *	1106 195 5100	2	Friction shoe spring
13 *	1106 195 1700	2	Spring retainer plate
14 *	1106 195 3200	1	Thrust washer
15 *	9460 624 0500	1	E-clip 5

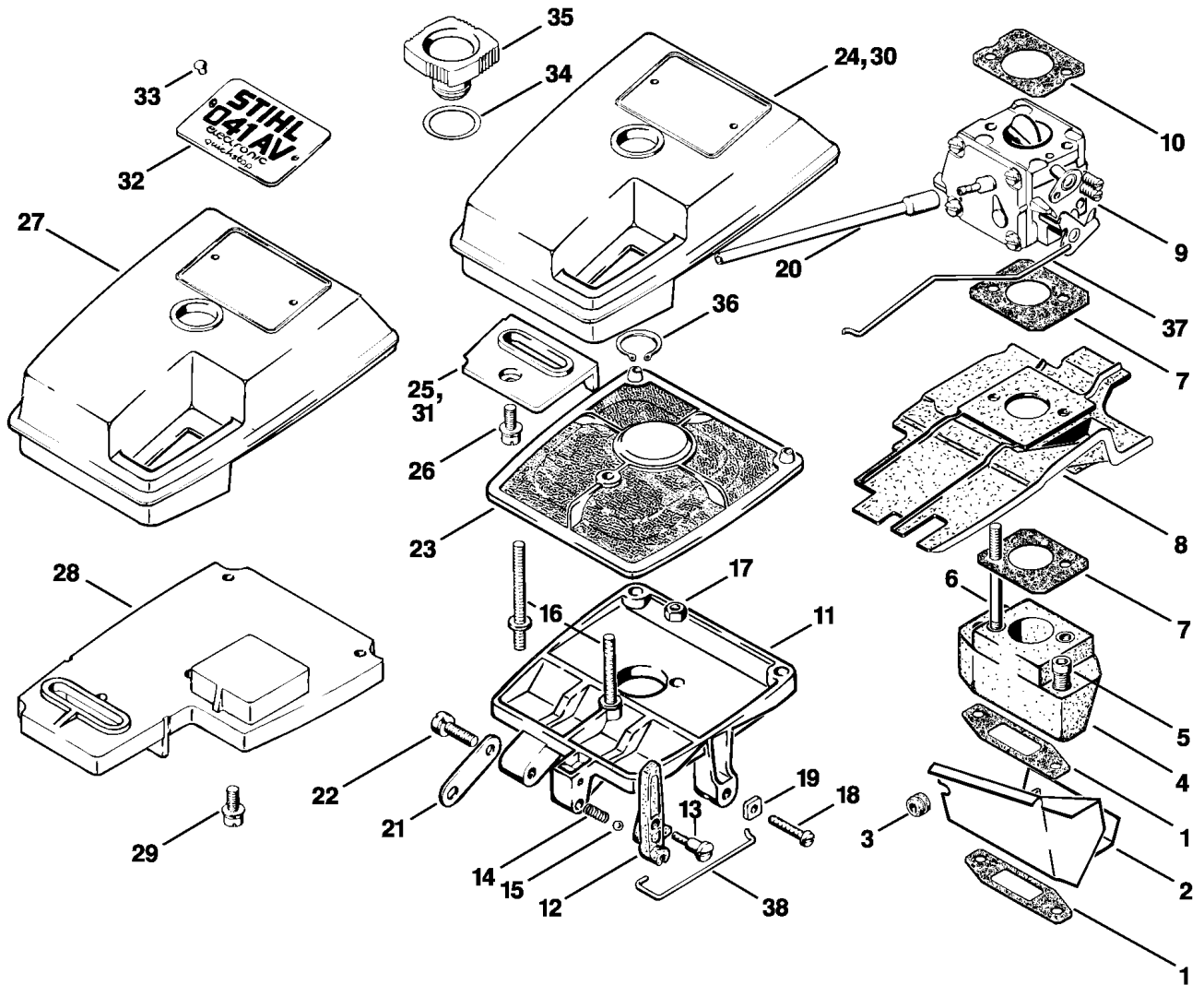
(1) 041 AVQ, (2) 041 AVEQ, (3) 041 AVSEQ, (4) 041 AVFBQ



110ET013 LÄ

Reference	Item number	Qty	Description
1	1110 129 1401	2	Gasket (1,2,4)
1	1110 129 1402	2	Gasket (3)
2	1110 146 7401	1	Deflecting plate (1,2,4)
2	1110 146 7402	1	Deflecting plate (3)
3	0000 989 0802	1	Grommet
4	1110 120 2201	1	Flange (1,2,4)
4	1110 120 2202	1	Flange (3)
5	9036 341 1070	2	Socket head screw M5x30
6	9123 319 0890	2	Stud M5x58
7	1111 129 1100	2	Gasket
8	1110 141 3000	1	Insulating plate
9	1110 120 0609	1	Carburetor HS-138B (1,2,4)
9	1110 120 0611	1	Carburetor HS-208B (3)
10	1110 149 1200	1	Gasket
11	1110 140 2815	1	Filter housing □ 12 - 15
12	1111 185 2000	1	Choke lever
13	0000 951 2600	1	Oval head screw M4x10
14	0000 997 0326	1	Compression spring
15	9516 003 1720	1	Ball Ø 4 mm
16	1110 148 1000	1	Stud M5x35 (3,4)
16	1110 148 1001	1	Stud M5x45 (1,2)
17	9216 261 0700	2	Hexagon nut M5
18	1110 122 6201	1	Idle speed adjustment screw
19	1115 121 7700	1	Guide piece

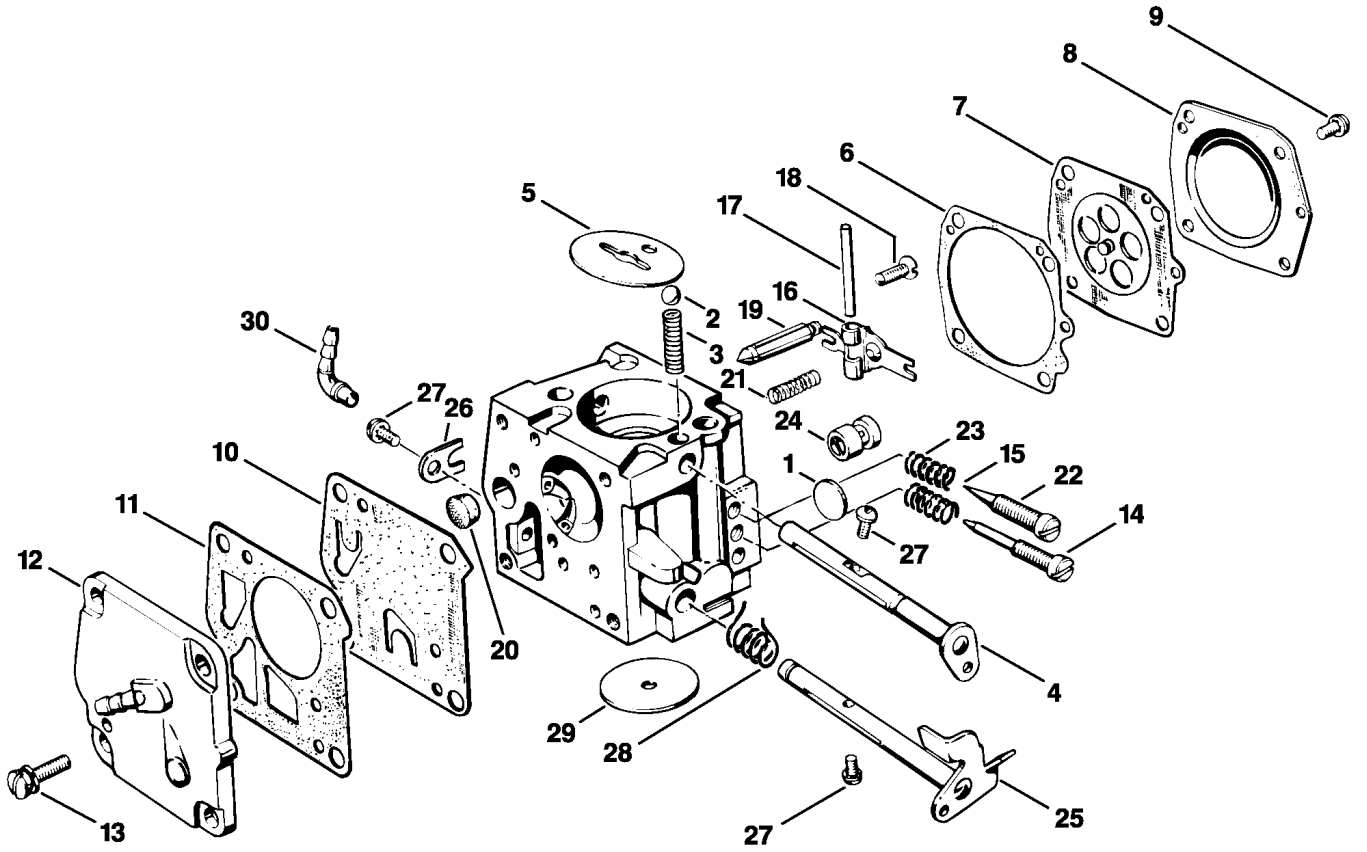
(1) 041 AVQ, (2) 041 AVEQ, (3) 041 AVSEQ, (4) 041 AVFBQ



110ET013 LÄ

Reference	Item number	Qty	Description
20		1	Hose 3.1x5.7x120 mm (D)
	0000 930 2803	1	Hose 3.1x5.7 mm x 1 m (A,B)
21	1110 148 4000	1	Strap
22	9048 216 1010	1	Pan head screw M5x18
23	1110 120 1601	1	Air filter, flocked
24	1110 140 1002	1	Filter cover (4) □ 25, 26
25	1110 141 1101	1	Insert (4)
26	9044 319 0660	1	Pan head screw M4x12 (3,4)
27	1110 140 1004	1	Filter cover (1,2) □ 28, 29
28	1110 141 1104	1	Insert (1,2)
29	9044 319 0660	3	Pan head screw M4x12 (1,2)
30	1110 140 1003	1	Filter cover (3) □ 26, 31
31	1110 141 1103	1	Insert (3)
32	0000 967 1551	1	Model plate 041 AVEQ
32	0000 967 1571	1	Model plate 041 AVSEQ
32	0000 967 1586	1	Model plate 041 AVQ
32	1110 967 1500	1	Model plate 041 AVFBQ
33	0000 974 1000	2	Round head rivet 3x6
34	0000 958 1705	1	Washer
35	1110 140 9500	1	Slotted nut
36	9455 621 1670	1	Circlip 16x1
37	1110 182 1506	1	Throttle rod
38	1110 185 1904	1	Choke rod

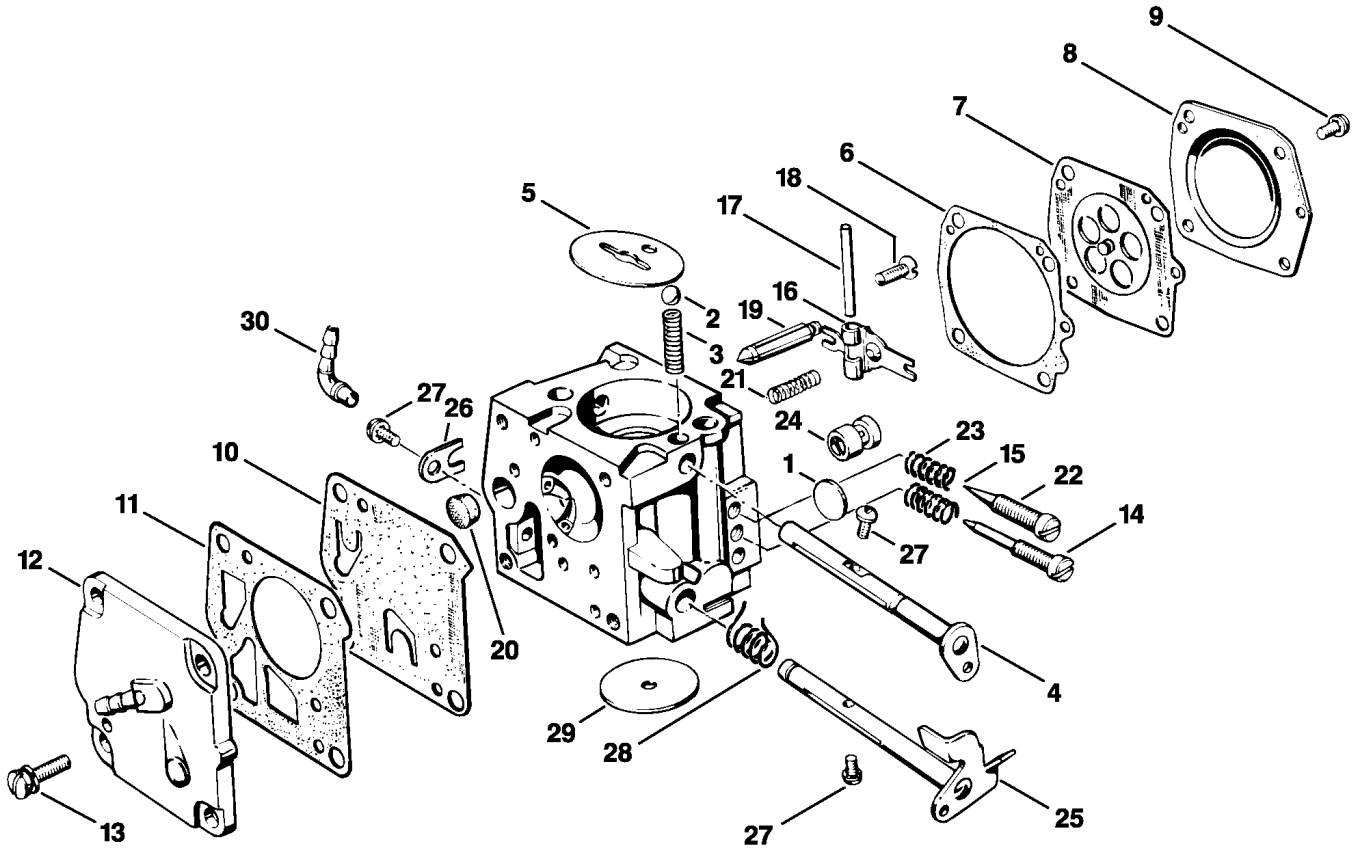
(1) 041 AVQ, (2) 041 AVEQ, (3) 041 AVSEQ, (4) 041 AVFBQ



110ET015 LÄ

Reference	Item number	Qty	Description
	1110 120 0609	1	Carburetor HS-138B (1,2,4) □ 1 - 30
	1110 120 0611	1	Carburetor HS-208B (3) □ 1 - 31
1	1110 122 9410	1	Plug
2	1110 122 4200	1	Ball
3	1110 122 3000	1	Spring
4	1110 120 7200	1	Choke shaft with lever
5	1115 121 2900	1	Choke shutter
6	1110 129 0900	1	Gasket
7	1110 121 4700	1	Metering diaphragm
8	1110 121 0811	1	End cover
9	1106 122 7400	4	Round head screw
10	1110 121 4800	1	Pump diaphragm
11	1110 129 1110	1	Gasket
12	1110 121 0815	1	End cover
13	1110 122 7700	4	Oval head screw
14	1110 122 6800	1	Low speed adjustment screw
15	1110 122 3030	1	Spring
16	1124 121 5000	1	Inlet control lever
17	1110 121 9200	1	Spindle
18	1110 122 7800	1	Oval head screw
19	1110 121 5100	1	Inlet needle
20	4221 121 7800	1	Strainer
21	1110 122 3020	1	Spring

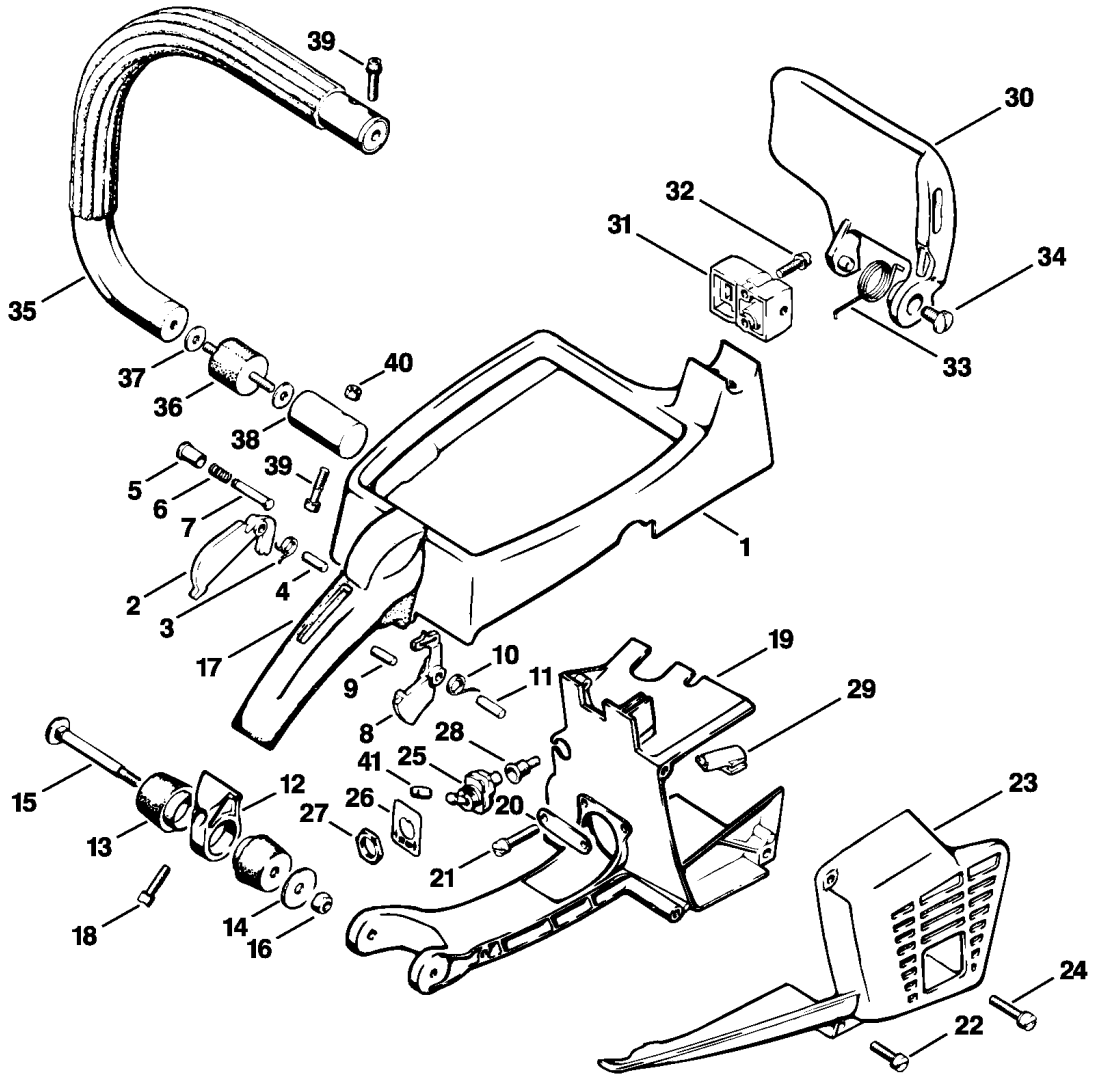
(1) 041 AVQ, (2) 041 AVEQ, (3) 041 AVSEQ, (4) 041 AVFBQ



110ET015 LÄ

Reference	Item number	Qty	Description
22	1111 122 6700	1	High speed adjustment screw
23	1106 122 3000	1	Spring
24	1111 121 5400	1	Valve jet
25	1111 120 7100	1	Throttle shaft with lever
26	1110 122 9300	1	Clip
27	1110 122 7400	3	Round head screw
28	1110 122 3200	1	Torsion spring
29	1115 121 3300	1	Throttle shutter
30	1110 122 3900	1	Elbow connector
	1110 120 8701	1	Control valve (A) (3)

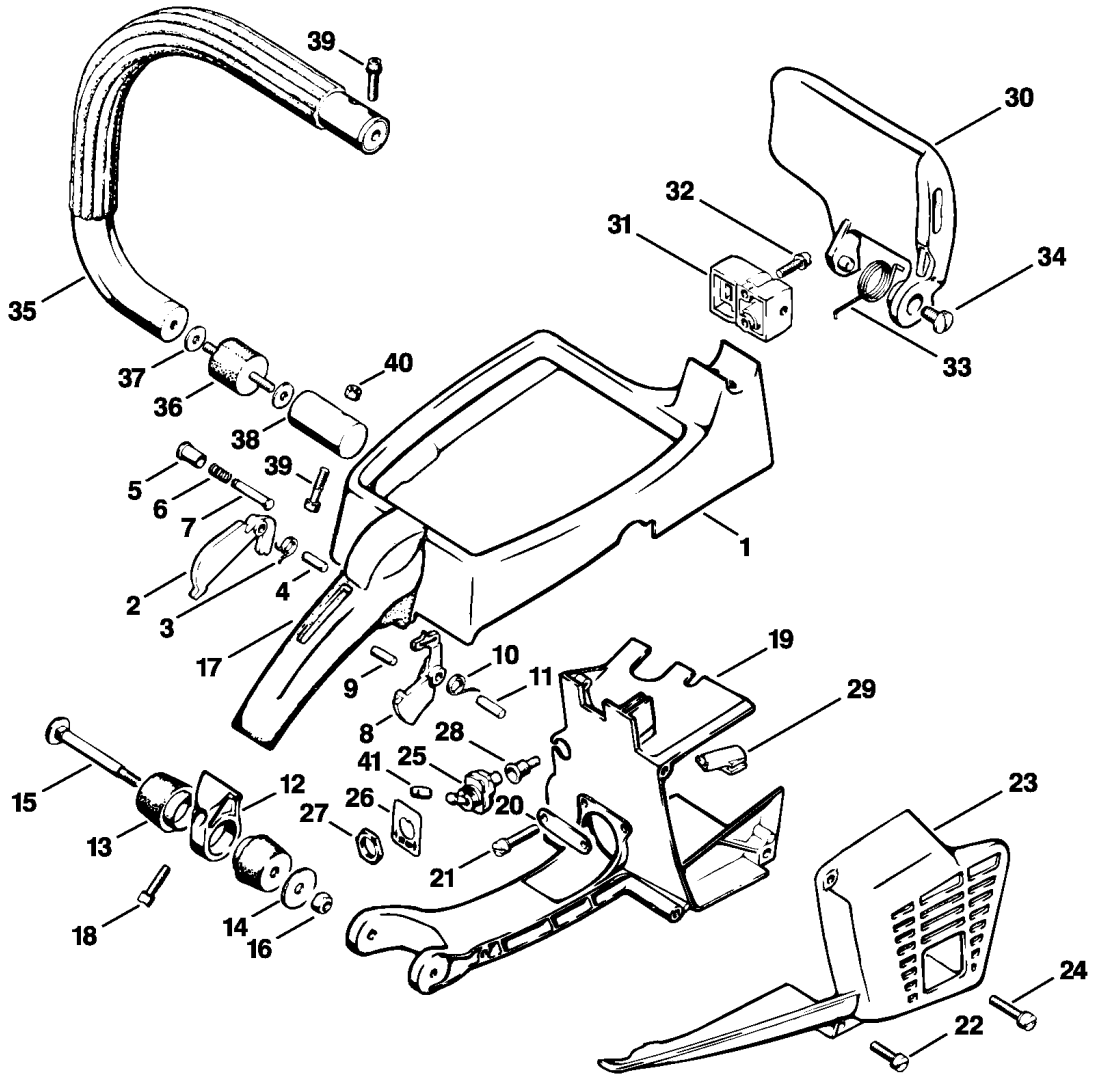
(1) 041 AVQ, (2) 041 AVEQ, (3) 041 AVSEQ, (4) 041 AVFBQ



110ET022 LÄ

Reference	Item number	Qty	Description
1	1110 791 4904	1	Handle frame
2	1110 182 0800	1	Trigger interlock
3	0000 998 1001	1	Torsion spring
4	9373 470 2120	1	Cylindrical pin 4x18
5	1111 182 9300	1	Starting throttle lock
6	0000 997 0603	1	Compression spring
7	1114 182 8900	1	Pin
8	1110 182 1002	1	Throttle trigger
9	9373 470 2130	1	Cylindrical pin 4x20
10	0000 998 1105	1	Torsion spring
11	9373 542 2610	1	Cylindrical pin 5x18
12	1110 791 7610	1	Support
13	1110 790 9900	2	Annular buffer
14	0000 958 0502	1	Washer
15	0000 951 8210	1	Flat head screw M6
16	9214 320 0700	1	Lock nut M5
17	1110 791 2204	1	Rubber grip
18	9048 216 1010	3	Pan head screw M5x18
19	1110 080 1610	1	Shroud
20	1110 148 3000	1	Shim
21	9045 319 1020	1	Socket head screw M5x20
22	9048 216 1010	3	Pan head screw M5x18
23	1110 146 6005	1	Guard
24	9048 216 1050	1	Pan head screw M5x25
25	1110 430 0202	1	Stop switch □ 41
26	0000 967 3506	1	Label

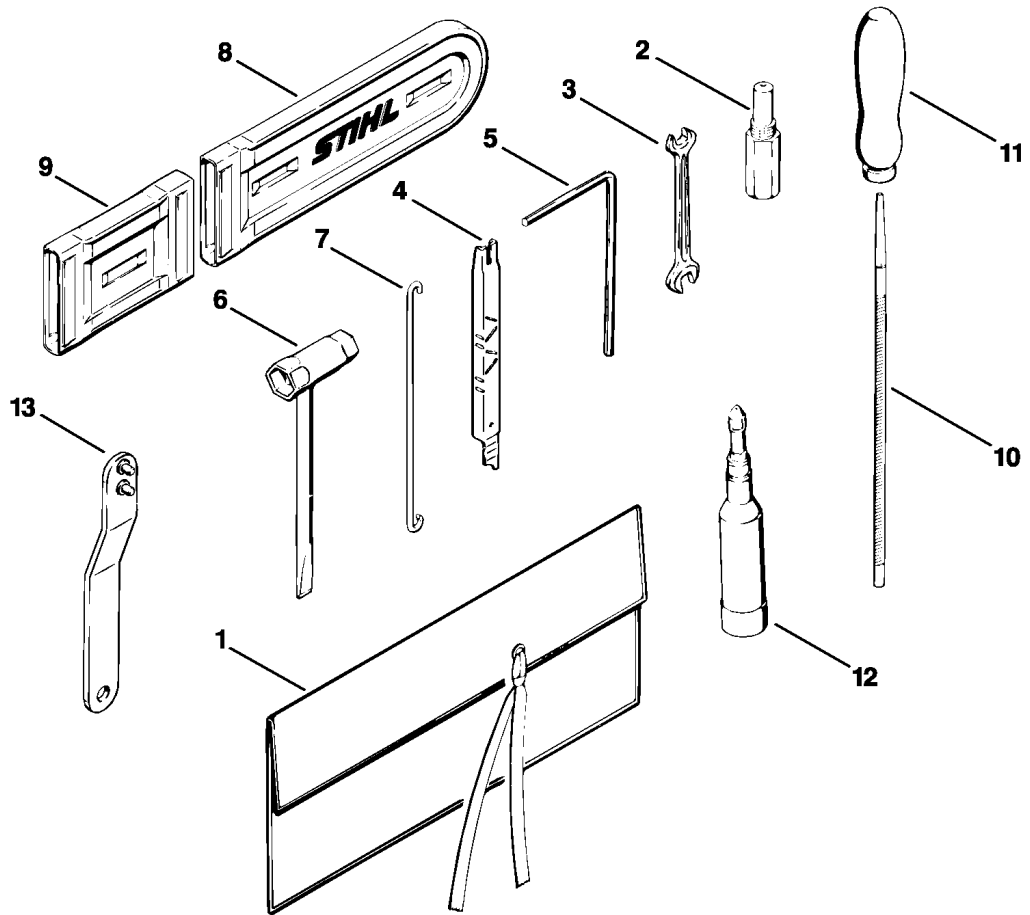
(1) 041 AVQ, (2) 041 AVEQ, (3) 041 AVSEQ, (4) 041 AVFBQ



110ET022 LÄ

Reference	Item number	Qty	Description
27	9211 260 1430	1	Hexagon nut M12x0.75
28	1110 432 9200	1	Grommet
29	0000 989 0502	1	Clamp
30	1114 792 9104	1	Hand guard
31	1110 791 3900	1	Support
32	9048 216 1010	2	Pan head screw M5x18
33	1113 791 8200	1	Torsion spring
34	0000 951 2904	1	Oval head screw M6x3.2x12
35	1110 790 1716	1	Handlebar with hose 290 mm /11 7/16" (1,2,3,4)
	0000 791 2002	1	Handle hose Ø 21 mm x 1 m / 7/8x40"
36	1110 790 9600	1	Annular buffer
37	9486 648 0620	3	Cup spring 18x6.2x0.60
38	1110 791 5410	1	Support (1,2,3,4)
39	9036 341 1020	3	Socket head screw M5x20
40	9214 320 0700	1	Lock nut M5
41	1110 432 9002	1	Protective cap

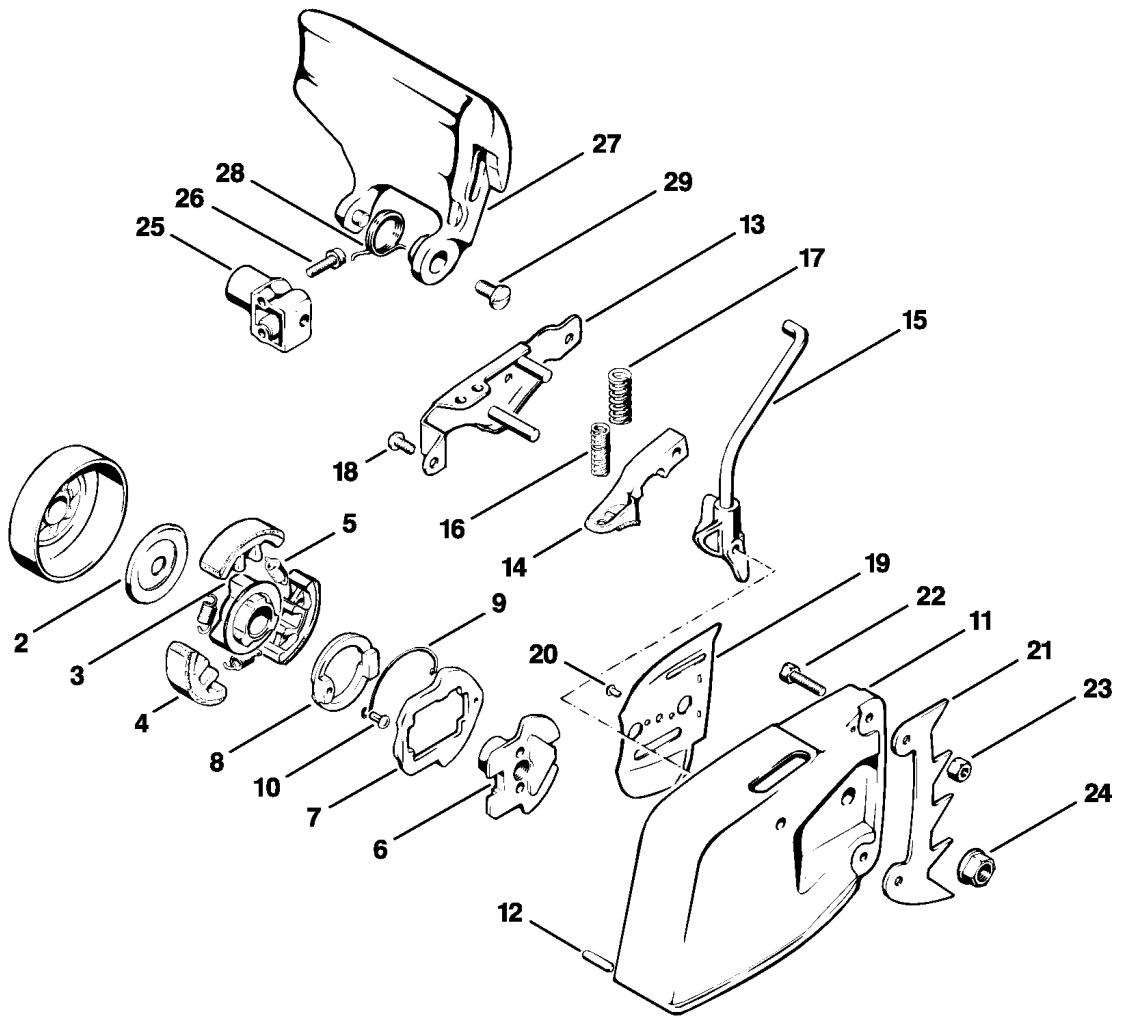
(1) 041 AVQ, (2) 041 AVEQ, (3) 041 AVSEQ, (4) 041 AVFBQ



110ET019 LÄ

Reference	Item number	Qty	Description
	1110 890 1410	1	Tool kit □ 1 - 7
1	0000 891 0800	1	Tool roll
2	1107 191 1201	1	Locking screw
3	0811 012 1152	1	Wrench 8x10
4	1110 893 4000	1	Filing gauge
5	0811 270 1080	1	Allen key 4x70x130
6	1119 890 3405	1	Combination wrench
7	1110 893 8800	1	Hook
8	0000 792 9111	1	Chain scabbard
9	0000 792 9132	1	Chain scabbard extension up to 63 cm
10	0811 411 8108	1	Round file Ø 5.5x200 mm (B)
11	0811 490 7860	1	File handle A100 (B)
12	1108 890 2500	1	Grease gun (B)
13	1113 890 3600	1	Wrench (B)
	1110 007 1050	1	Set of gaskets (A, B)
	1110 007 1060	1	Set of carburetor parts (A, B)
	0000 930 2207	1	Hose 3 m / 118" (A, B)
	0000 930 2201	1	Ignition lead 10 m (A, B)
	0000 930 2202	1	Ignition lead 10 m (A, B)
	0000 930 2200	1	Starter rope Ø 4.5 mm x 30.5 m (A, B)

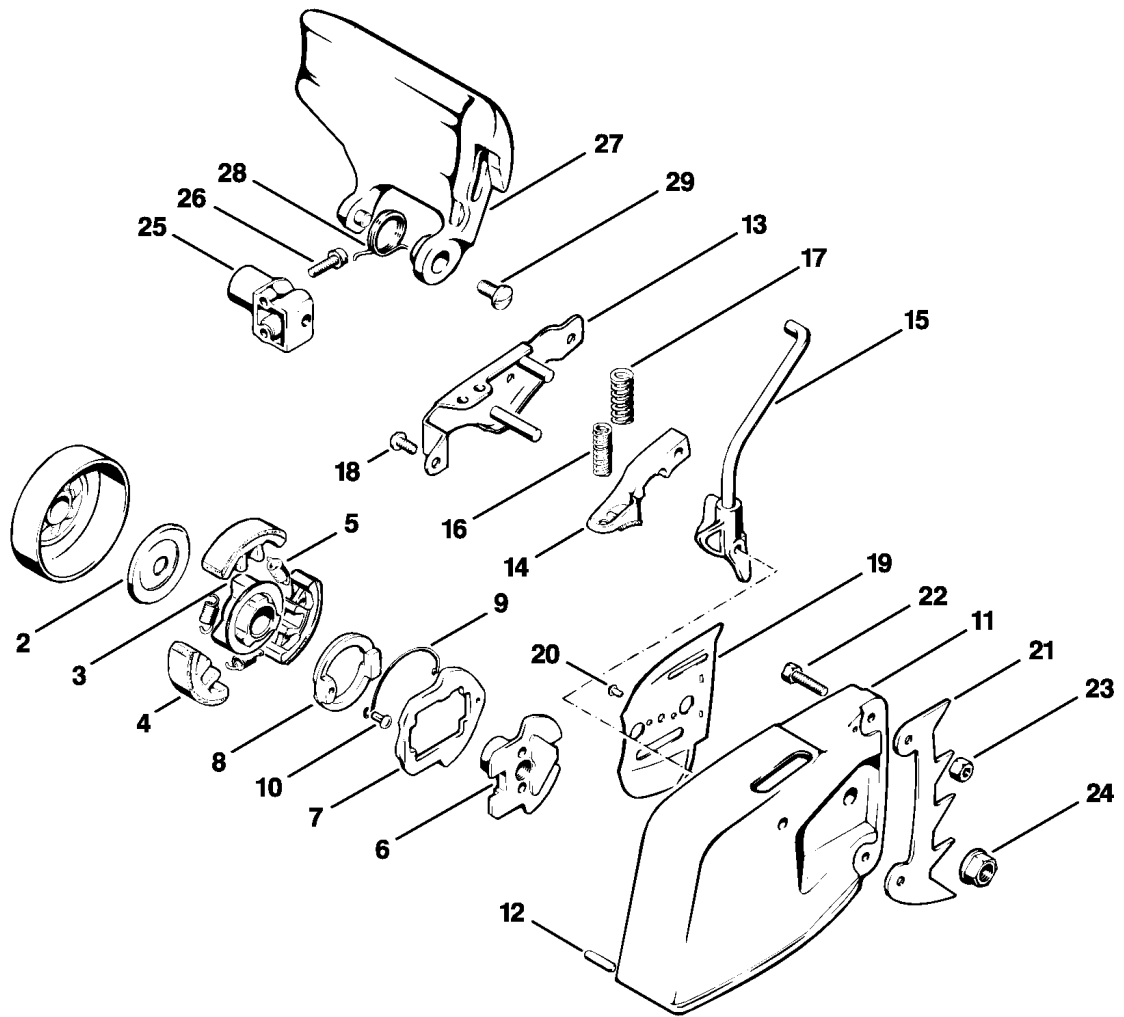
(1) 041 AVQ, (2) 041 AVEQ, (3) 041 AVSEQ, (4) 041 AVFBQ



110ET021 LÄ

Reference	Item number	Qty	Description
2	1110 162 8900	1	Washer
	1113 160 2000	1	Clutch □ 3 - 5
3	1113 160 2300	1	Carrier
4	1110 160 1500	3	Clutch shoe
5	0000 997 5811	3	Tension spring
	1113 160 3400	1	Drive disc □ 6 - 10
6	1113 162 3601	1	Drive disc
7	1113 162 3901	1	Slide control
8	1113 160 4000	1	Locking slide □ 9, 10
9	1113 162 7801	1	Spring
10	1113 162 1200	1	Rivet
	1110 640 1701	1	Chain sprocket cover □ 11 - 23
11	1110 640 1700	1	Chain sprocket cover □ 12
12	0000 971 0608	1	Pin
13	1113 640 4901	1	Cover plate
14	1113 640 2801	1	Brake shoe
15	1110 640 2301	1	Cam
16	0000 997 1100	1	Helical spring
17	0000 997 0900	1	Helical spring
18	9079 319 0950	2	Flat head screw M5x10
19	1113 664 1100	1	Outer side plate
20	9441 065 1910	2	Round head rivet 3x8

(1) 041 AVQ, (2) 041 AVEQ, (3) 041 AVSEQ, (4) 041 AVFBQ



110ET021 LÄ

Reference	Item number	Qty	Description
21	1110 664 0501	1	Bumper spike
22	9008 319 0960	2	Hexagon head screw M5x12
23	9214 320 0700	2	Lock nut M5
24	9220 260 1100	2	Hexagon nut M8
25	1110 791 3900	1	Support
26	9048 216 1010	2	Pan head screw M5x18
27	1114 792 9101	1	Hand guard
28	1113 791 8200	1	Torsion spring
29	0000 951 2904	1	Oval head screw M6x3.2x12

(1) 041 AVQ, (2) 041 AVEQ, (3) 041 AVSEQ, (4) 041 AVFBQ